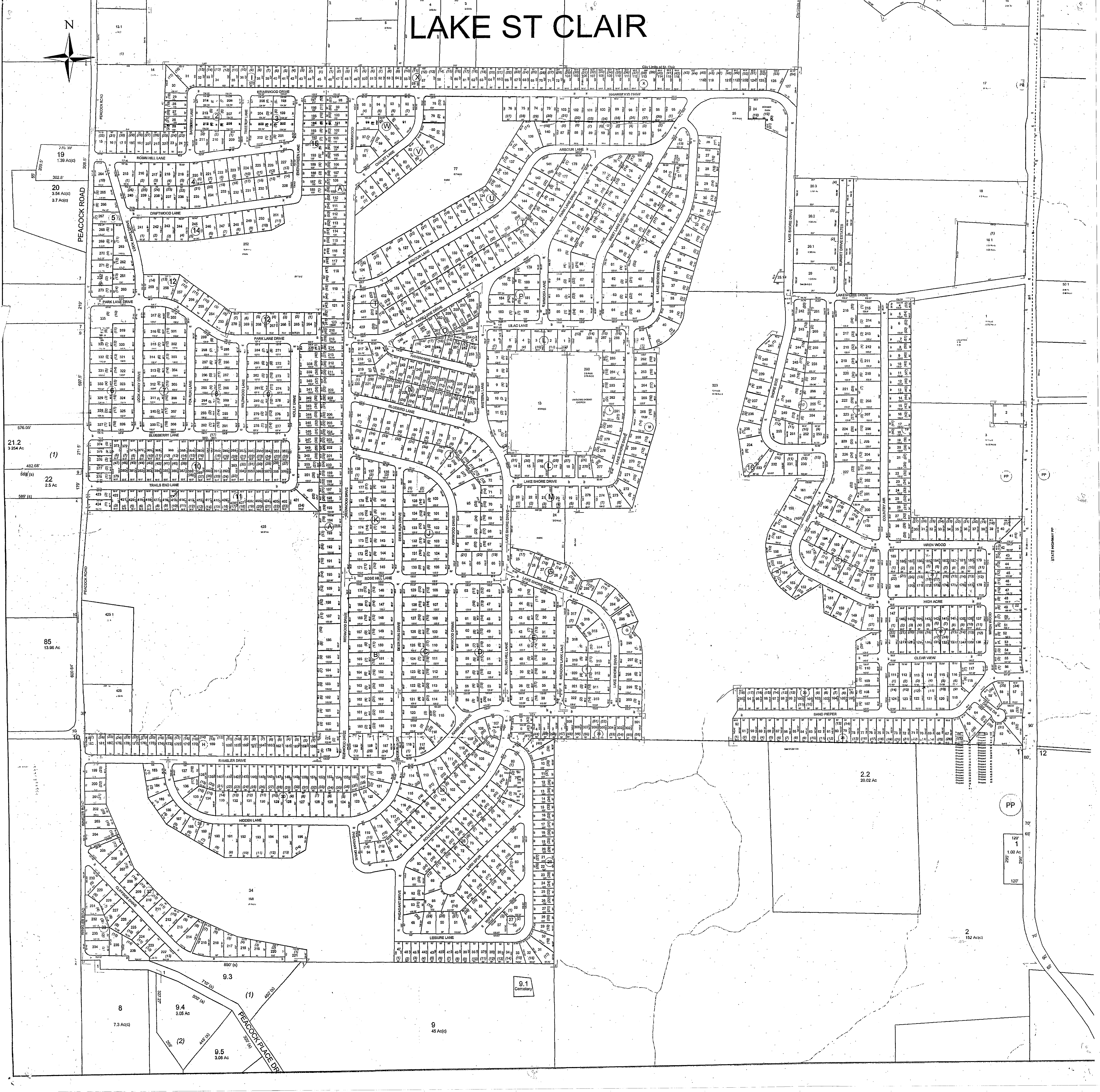
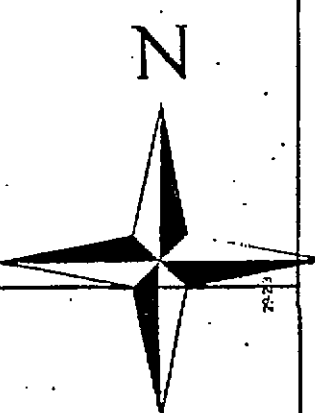


LAKE ST CLAIR



19
1.39 Ac(c)

20
3.54 Ac(c)
3.7 Ac(c)

21.2
3.254 Ac

(1)

22
2.5 Ac

85
13.96 Ac

8
7.3 Ac(c)

9.4
3.05 Ac

(2)

9.5
3.08 Ac

9
45 Ac(c)

9.1
Cemetery

2.2
20.02 Ac

1
1.00 Ac

2
1.52 Ac(c)

PP

120'

205'

205'

120'